

Proteax for Spreadsheets 1.4

Shared Installation Guide

jan@biochemfusion.com 2011-12-30

biochemfusion

Table of Contents

1	Introduction	3
2	System requirements	3
3	Pre-install checklist	4
4	Installing	4
5	Post-install checklist	5
6	First-time use by regular end users	6
7	Installation done	6
8	Backup	7

1 Introduction

Proteax for Spreadsheets can be installed by normal end-users without any special privileges. In that case Proteax will be installed into the user's local application directory and will not affect any system-wide configuration parameters. This provides maximum application isolation and minimum configuration problems.

If you however run the installer with administrator privileges you can do a shared installation that is suitable for e.g. Terminal Server environments. This document will guide you through a shared installation and provide a post-install checklist for verifying that the shared installation works as expected.

2 System requirements

Proteax for Spreadsheets requires the following pre-installed software.

Windows OS	Any 32- or 64-bit version of <ul style="list-style-type: none">■ Windows XP SP2 or later■ Vista■ Windows 7■ Windows Server 2003■ Windows Server 2008
MS Office	Any one of <ul style="list-style-type: none">■ Office 2003■ Office 2007■ Office 2010 (32- or 64-bit)
OpenOffice.org	<ul style="list-style-type: none">■ OpenOffice.org Calc 3.1 or later

You must have at least one or both of the above office suites installed.

The MS Office and the OpenOffice.org spreadsheet add-ins do not conflict. They run independently although they will share the Live Preview window if used simultaneously.

3 Pre-install checklist

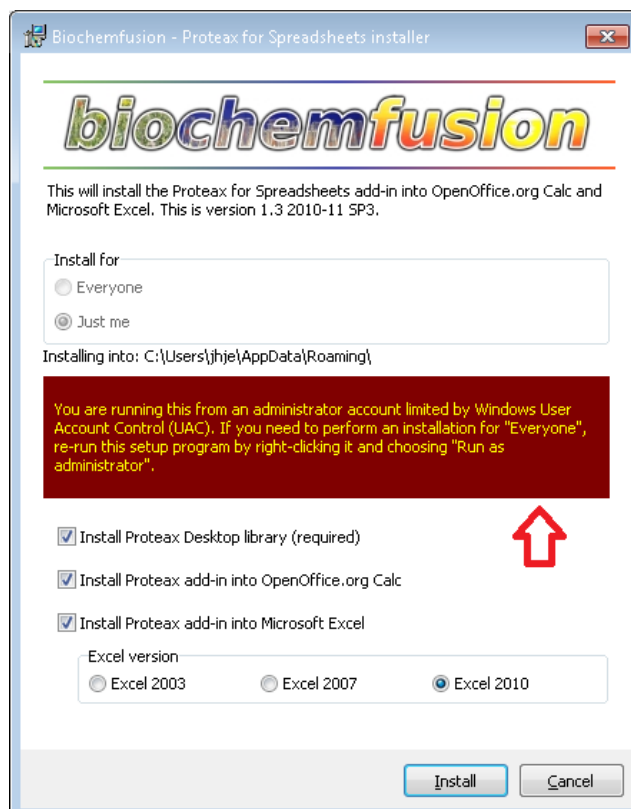
- You have downloaded the Proteax for Spreadsheets installer “1.4 2011-12-30” or later from <http://www.biochemfusion.com/downloads/>.

You are ready to install. If your system has sufficient horsepower to run the software listed in the System Requirements then it can also run Proteax for Spreadsheets.

4 Installing

Unpack the downloaded installer (the password to unpack is “bcf”) and start it.

If you see the following warning on the installer main screen you are trying to use an account that does not have full administrator privileges.

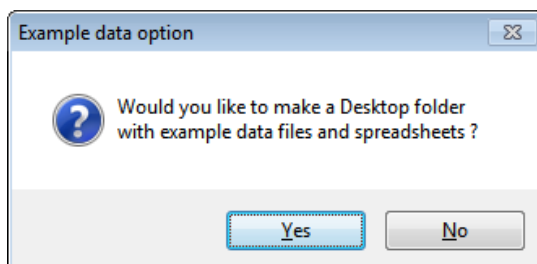


In that case, please re-run the installer via “Run as administrator”.

The installer does not automatically request full administrator privileges on Vista-like systems. This is by design as it would prevent a regular unprivileged/untrusted install by an administrator account – which could e.g. be an end user or developer on a corporate desktop. If a process automatically requests escalated privileges and is denied those privileges it will not run at all.

When the installer is nearing completion and shows you the following dialog,

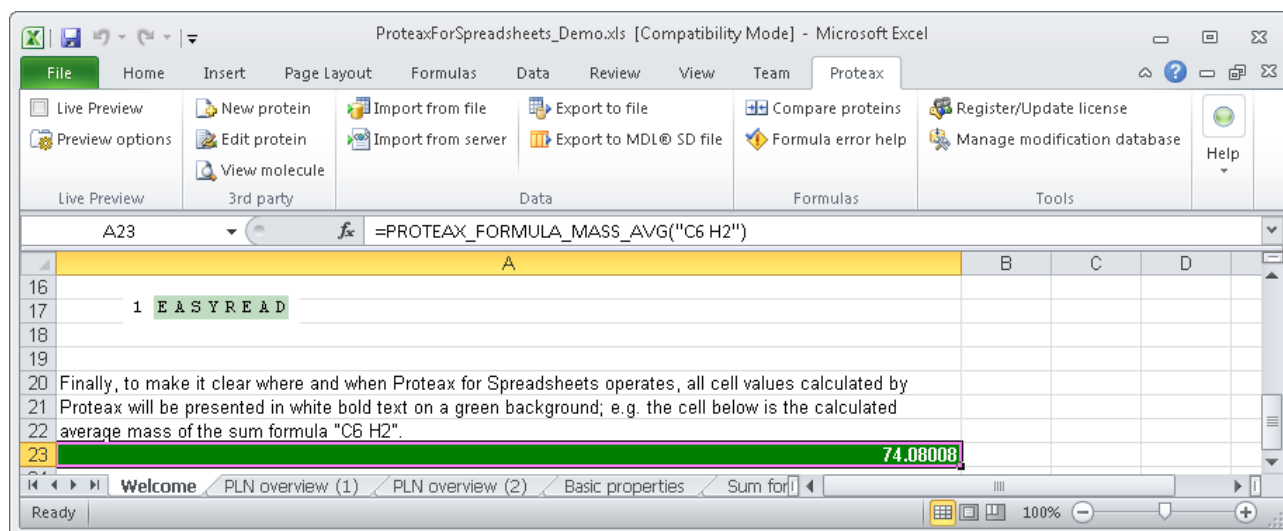
you are advised to answer "Yes".



The example spreadsheet will be used in the next section to verify that your installation works.

5 Post-install checklist

Open the Desktop folder `ProteaxForSpreadsheets_ExampleData`. The folder contains an example spreadsheet `ProteaxForSpreadsheets_Demo.xls`. You should be able to open this sheet in Excel both via the administrator account you used for installation as well as from a normal unprivileged user account without encountering `#NAME?` anywhere in the workbook.



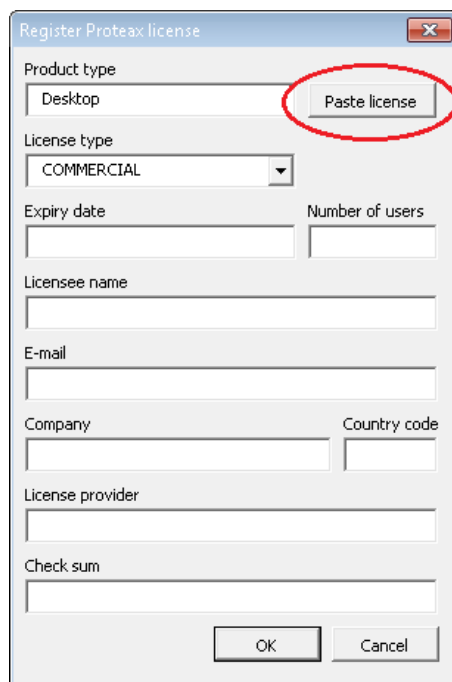
NOTE: Excel 2003 - Remember to force a recalculation with `Ctrl+Alt+F9` after loading the sheet to be sure that the results you see on screen are to be trusted.

If you see `#VALUE!` errors then please check that you have registered a license. You can register a license from within Excel or OpenOffice.org Calc via the spreadsheet's Proteax menu.

To obtain a trial license, please visit

http://www.proteax.dk/proteax_live/license_v3.py/request_trial

The generated license from the web page can be copied directly from the web page and registered in Proteax by using the "Paste license" button on the license registration dialog.



The license is stored in the %PROTEAX_FOR_SPREADSHEETS_HOME% directory and applies to all users. The license must therefore be registered by an Excel session that runs with administrator privileges or otherwise has write-access to the Program Files directory.

If you encounter cells containing #NAME? then please check that the Proteax VBA add-in is loaded. There should be a "Proteax" menu in Excel 2003 and a "Proteax" ribbon section in Excel 2007/2010. If the problem still persists then please contact support.

6 First-time use by regular end users

When a regular end user opens Excel for the first time after Proteax for Spreadsheets has been installed an extra empty workbook will be seen in Excel. This is normal behavior and will only occur the first time the Proteax VBA add-in is loaded. The VBA add-in auto-registers a COM add-in the first time it is loaded and that has the side-effect of creating an extra blank workbook.

7 Installation done

Your installation is now completed. If you run into problems or have further questions, please feel free to contact support@biochemfusion.com.

8 Backup

The Proteax add-in persists its settings (structure display options, default structure editor choice etc.) in normal .INI files in a user-local directory. You will find the .INI files in the directory

```
%APPDATA%\Biochemfusion\config\
```

No critical information is stored in the add-in settings files.

The modification database should however be backed up on a regular basis. The modification database file is

```
%PROTEAX_FOR_SPREADSHEETS_HOME%\db\proteax_desktop_mod_db.database
```

The database is a sqlite3 relational database contained in a single file. Backing it up is as simple as doing a regular file copy. When backing up, note that the file will be locked by end-users when a transaction is on-going – e.g. while a modification entry is being added or updated. Each transaction will however have a duration of only milliseconds on any normal system.